

Public Access rescue system

Technical Specifications



Access to Rescue Systems Can Help Save Lives

Trauma is the #1 cause of death for people between the ages of 1 and 46, accounting for 30% of all lives lost in the U.S.¹ The faster medical assistance is provided, the better the outcome.

The Public Access rescue system is designed to empower lay rescuers with equipment and directions on how to provide medical care during an emergency. It includes medical and trauma rescue supplies and is paired with an interactive application that provides instructions on how to treat various life-threatening injuries and illnesses.

Medical Supplies to Treat Multiple Victims

Intended to treat multiple victims, each Public Access rescue system carry case includes four individual Utility kits for distribution in case of a mass casualty event. Utility kits include supplies to manage severe bleeding, airway complications, seizures, and more. The individual Utility kits allow multiple rescuers to access critical supplies and the instructional app at the same time.

Real-time Instructions at Your Fingertips

The Public Access rescue system pairs with the interactive Mobilize Rescue app. The app is accessible from a smartphone, with or without WiFi. Treatment instructions are given through simple interactive prompts, written instructions, and visual cues that guide rescuers on using the medical supplies in the kit to provide care during a medical emergency.

Empower Your Community

Distribute the Mobilize Rescue app and empower everyone in your organization to help during an emergency. With a multi-user app license, anyone with a smartphone can access the app and use the supplies to help in the critical moments before professional rescuers arrive. With the Public Access rescue systems, you can have confidence that you and your community are prepared for the unexpected.

System Contents

Trauma Supplies

SOF-T Wide Tourniquet	4
QuikClot Bleeding Control Dressing	4
Hyfin Chest Seal	4
4" Emergency Trauma Dressing	4
CPR Face Shield With Bite Block	4
Emergency Space Mylar Blanket	4
Trauma Shears	4
Nitrile Gloves	32

Treatment Capabilities

SEVERE BLEEDING

UNCONSCIOUSNESS

TROUBLE BREATHING

OPIATE OVERDOSES

HYPOTHERMIA

SEIZURES

CHOKING

CPR INSTRUCTION

AED APPLICATION

Public Access rescue system

Equipment

Designed for multiple rescuers, the Public Access rescue system empowers everyone in your organization to help manage critical medical emergencies before EMS arrives.

Lightweight and easy to carry, each Public Access rescue system carry case includes four Utility kits with supplies to manage severe bleeding, airway complications, and more.

Dimensions: L 17.2" x W 13.7 x D 6.5"

Weight: 7 lbs ± 1lbs

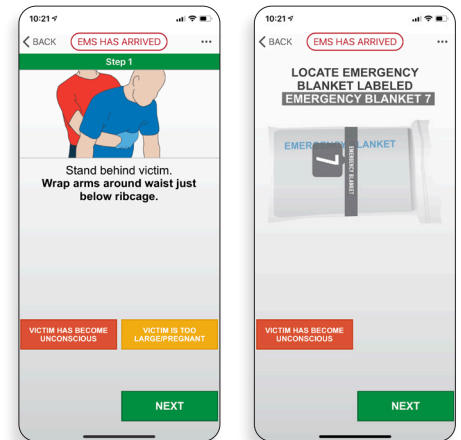


Technology

Public Access rescue systems include a multi-user license for the Mobilize Rescue app, which is accessed via smartphone and can be used with or without WiFi. The app provides real-time treatment instructions through interactive prompts, written instructions, and visual cues. It is available for both iOS and Android devices.

Equipment and App Integration

Designed for ease of use, the system's medical supplies are clearly labeled, logically organized, and color-coded to match the instructions in the Mobilize Rescue app. This intuitive organization makes locating supplies easy, saving valuable time during an emergency.



The Mobilize Rescue app provides real-time treatment guidance and is available for iOS and Android devices.

STORAGE RECOMMENDATIONS & DIAGNOSTIC CHECK | Individual supplies within the unit may be negatively impacted by exposure to hot and cold temperatures. Individual supplies' expiration dates vary from 1-5 years from date of purchase; it is crucial that you perform diagnostic checks to ensure that the unit is charged to 100%, the proof seal is intact (not tampered with), and that the medical supplies are not damaged or contaminated.

¹<https://www.nattrauma.org/what-is-trauma/trauma-statistics-facts/>